

# Highway Map of Logan County, Ohio



## SCOTT C. COLEMAN, P.E., P.S.

County Engineer  
Logan County Engineer's Office  
191 Rt. 13  
P.O. Box 427  
Bellefontaine, Ohio 43111  
Phone: (937) 592-2791  
Fax: (937) 599-2658  
Web site Address: lceo.us  
E Mail: loganeng@lceo.us

### COUNTY STATISTICS

2010 Population	45,868
County Area	423 Sq. Miles
U.S. & State Roads	249 Miles
County Roads	360 Miles
Township Roads	347 Miles
Total Roads	966 Miles
Bikeways	54 Miles

### TOWNSHIPS POPULATION

Bloomfield	430
Bokes Creek	572
Harrison	1,633
Jefferson	2,051
Lake	632
Liberty	1,240
McArthur	1,585
Monroe	586
Perry	964
Pleasant	919
Richland	1,669
Rush Creek	1,705
Stokes	3,541
Washington	819
West Mansfield	2,214
Zanesfield	1,140

### MUNICIPALITIES POPULATION

Belle Center	813
Bellefontaine	13,370
DeGraff	1,285
Huntsville	431
Lakeview	1,072
Quincy	706
Roadway	706
Russysville	516
Russells Point	1,302
Valley Liberty	1,272
West Liberty	1,805
West Mansfield	1,692
Zanesfield	197



138 Sherman Ave. #1, Tonawanda, NY 14175  
(419) 247-6474

**POINT OF INTEREST**

- Village Street
- Township Rd
- County Rd
- U.S. State Route
- Highway
- PARKING AREA
- ADDRESS NUMBERING SYSTEM
- INCORPORATED CITY
- UNINCORPORATED
- SCHOOL
- HOSPITAL
- MED CENTER

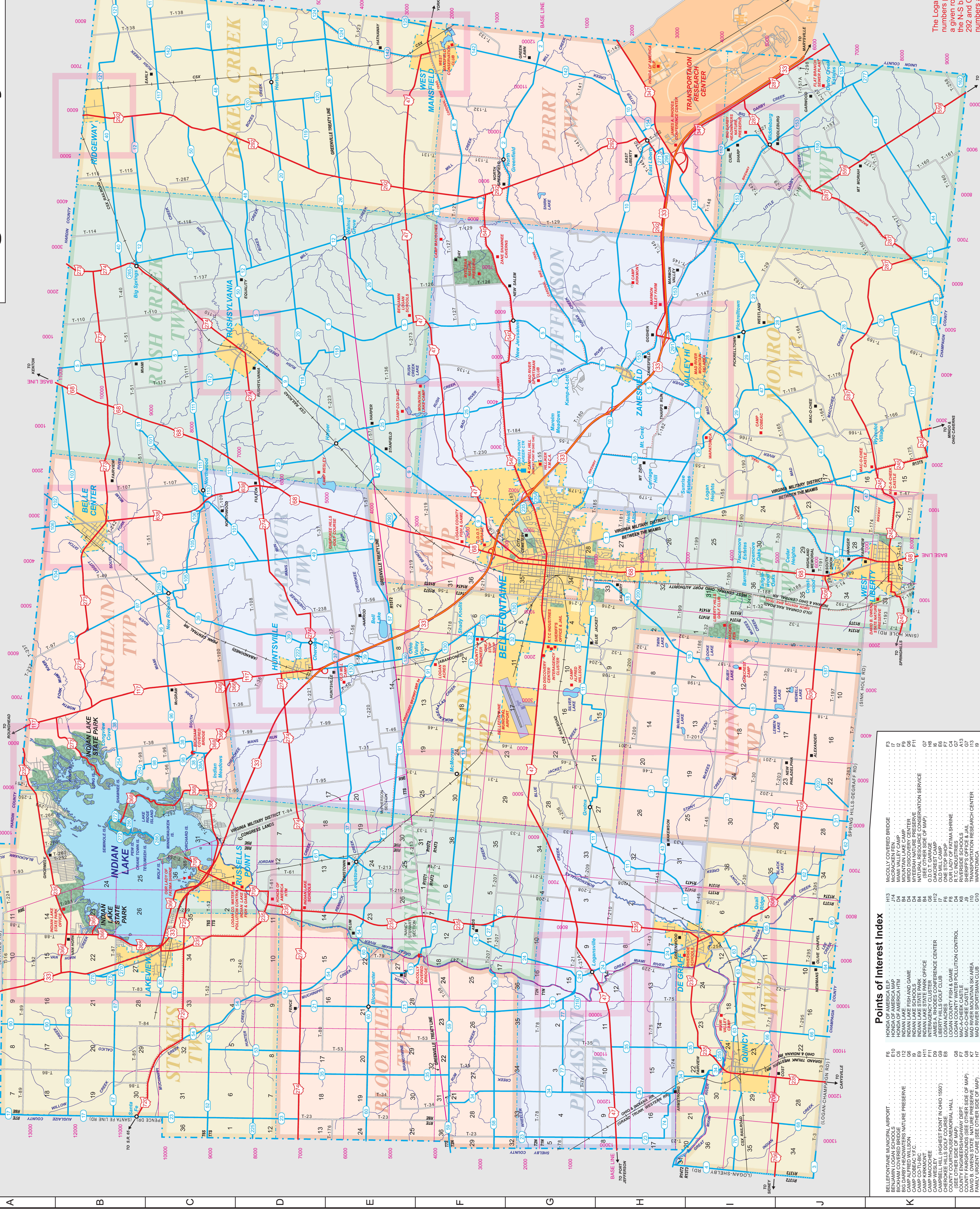
**SCALE (IN MILES)**

0 1 2 3 4 5 6 7 8 9 10 11 12 13 14 15 16 17 18 19 20 21 22 23 24 25 26 27 28 29 30 31 32 33 34 35 36 37 38 39 40 41 42 43 44 45 46 47 48 49 50 51 52 53 54 55 56 57 58 59 60 61 62 63 64 65 66 67 68 69 70 71 72 73 74 75 76 77 78 79 80 81 82 83 84 85 86 87 88 89 90 91 92 93 94 95 96 97 98 99 100

This map is intended for use as a reference. All boundaries and locations are approximate. The information is provided as a service to the public and is not intended to be used as a legal document. No part of this map or its contents may be reproduced, stored in a retrieval system, or transmitted in any form or by any means, electronic, mechanical, photocopying, recording, or by any information storage and retrieval system, without the prior written permission of Engels Maps and Guides LLC. It is intended to be accurate. Engels Maps and Guides LLC is not responsible for any errors or omissions. This is a custom map product produced for Logan County Engineer. This map is not available for reprint or commercial production.

Map reworkings  
© Logan County Engineer  
© Engels Maps and Guides LLC

# Logan County, Ohio



### Points of Interest Index

13	MASON COVERED BRIDGE
14	MCCORMICK FERRY
15	MAM VALLEY CAMP
16	HONDA OF AMERICA
17	WOOD DISCOVERY CENTER
18	WYVERN NATURE PRESERVATION SERVICE
19	INDIAN LAKE STATE PARK
20	INDIAN LAKE STATE PARK OFFICE
21	INDIAN LAKE STATE PARK OFFICE
22	JAMES A. RHODES CONFERENCE CENTER
23	LIBERTY HILLS GOLF CLUB
24	LOGAN COUNTY FISHERY & GAME
25	LOGAN COUNTY HOUSE/NEORURAL HALL
26	COUNTY ENGINEERS/HIGHWAY DEPT.
27	COUNTY ENGINEERS/HIGHWAY DEPT.
28	COUNTY ENGINEERS/HIGHWAY DEPT.
29	CAMP WHEELER
30	CAMP WHEELER
31	CAMP WHEELER
32	CAMP WHEELER
33	CAMP WHEELER
34	CAMP WHEELER
35	CAMP WHEELER
36	CAMP WHEELER
37	CAMP WHEELER
38	CAMP WHEELER
39	CAMP WHEELER
40	CAMP WHEELER
41	CAMP WHEELER
42	CAMP WHEELER
43	CAMP WHEELER
44	CAMP WHEELER
45	CAMP WHEELER
46	CAMP WHEELER
47	CAMP WHEELER
48	CAMP WHEELER
49	CAMP WHEELER
50	CAMP WHEELER
51	CAMP WHEELER
52	CAMP WHEELER
53	CAMP WHEELER
54	CAMP WHEELER
55	CAMP WHEELER
56	CAMP WHEELER
57	CAMP WHEELER
58	CAMP WHEELER
59	CAMP WHEELER
60	CAMP WHEELER
61	CAMP WHEELER
62	CAMP WHEELER
63	CAMP WHEELER
64	CAMP WHEELER
65	CAMP WHEELER
66	CAMP WHEELER
67	CAMP WHEELER
68	CAMP WHEELER
69	CAMP WHEELER
70	CAMP WHEELER
71	CAMP WHEELER
72	CAMP WHEELER
73	CAMP WHEELER
74	CAMP WHEELER
75	CAMP WHEELER
76	CAMP WHEELER
77	CAMP WHEELER
78	CAMP WHEELER
79	CAMP WHEELER
80	CAMP WHEELER
81	CAMP WHEELER
82	CAMP WHEELER
83	CAMP WHEELER
84	CAMP WHEELER
85	CAMP WHEELER
86	CAMP WHEELER
87	CAMP WHEELER
88	CAMP WHEELER
89	CAMP WHEELER
90	CAMP WHEELER
91	CAMP WHEELER
92	CAMP WHEELER
93	CAMP WHEELER
94	CAMP WHEELER
95	CAMP WHEELER
96	CAMP WHEELER
97	CAMP WHEELER
98	CAMP WHEELER
99	CAMP WHEELER
100	CAMP WHEELER

### County Road Index

1	H-18-18
2	F-12-10
3	G-10-10
4	G-10-10
5	G-10-10
6	G-10-10
7	G-10-10
8	G-10-10
9	G-10-10
10	G-10-10
11	G-10-10
12	G-10-10
13	G-10-10
14	G-10-10
15	G-10-10
16	G-10-10
17	G-10-10
18	G-10-10
19	G-10-10
20	G-10-10
21	G-10-10
22	G-10-10
23	G-10-10
24	G-10-10
25	G-10-10
26	G-10-10
27	G-10-10
28	G-10-10
29	G-10-10
30	G-10-10
31	G-10-10
32	G-10-10
33	G-10-10
34	G-10-10
35	G-10-10
36	G-10-10
37	G-10-10
38	G-10-10
39	G-10-10
40	G-10-10
41	G-10-10
42	G-10-10
43	G-10-10
44	G-10-10
45	G-10-10
46	G-10-10
47	G-10-10
48	G-10-10
49	G-10-10
50	G-10-10
51	G-10-10
52	G-10-10
53	G-10-10
54	G-10-10
55	G-10-10
56	G-10-10
57	G-10-10
58	G-10-10
59	G-10-10
60	G-10-10
61	G-10-10
62	G-10-10
63	G-10-10
64	G-10-10
65	G-10-10
66	G-10-10
67	G-10-10
68	G-10-10
69	G-10-10
70	G-10-10
71	G-10-10
72	G-10-10
73	G-10-10
74	G-10-10
75	G-10-10

### Township Road Index

T-1	F-13
T-2	F-13
T-3	F-13
T-4	F-13
T-5	F-13
T-6	F-13
T-7	F-13
T-8	F-13
T-9	F-13
T-10	F-13
T-11	F-13
T-12	F-13
T-13	F-13
T-14	F-13
T-15	F-13
T-16	F-13
T-17	F-13
T-18	F-13
T-19	F-13
T-20	F-13
T-21	F-13
T-22	F-13
T-23	F-13
T-24	F-13
T-25	F-13
T-26	F-13
T-27	F-13
T-28	F-13
T-29	F-13
T-30	F-13
T-31	F-13
T-32	F-13
T-33	F-13
T-34	F-13
T-35	F-13
T-36	F-13
T-37	F-13
T-38	F-13
T-39	F-13
T-40	F-13
T-41	F-13
T-42	F-13
T-43	F-13
T-44	F-13
T-45	F-13
T-46	F-13
T-47	F-13
T-48	F-13
T-49	F-13
T-50	F-13
T-51	F-13
T-52	F-13
T-53	F-13
T-54	F-13
T-55	F-13
T-56	F-13
T-57	F-13
T-58	F-13
T-59	F-13
T-60	F-13
T-61	F-13
T-62	F-13
T-63	F-13
T-64	F-13
T-65	F-13
T-66	F-13
T-67	F-13
T-68	F-13
T-69	F-13
T-70	F-13
T-71	F-13
T-72	F-13
T-73	F-13
T-74	F-13
T-75	F-13
T-76	F-13
T-77	F-13
T-78	F-13
T-79	F-13
T-80	F-13
T-81	F-13
T-82	F-13
T-83	F-13
T-84	F-13
T-85	F-13
T-86	F-13
T-87	F-13
T-88	F-13
T-89	F-13
T-90	F-13
T-91	F-13
T-92	F-13
T-93	F-13
T-94	F-13
T-95	F-13
T-96	F-13
T-97	F-13
T-98	F-13
T-99	F-13
T-100	F-13

The Logan County rural house numbering system provides 1000 numbers per mile or one number each 5.28 feet measured along a given road in thousands of a mile from a base line. USR 68 is the N-S base line. SR 47 west of Bellefontaine and SR 540 to SR 292 and CH 2 from SR 292 are the E-W base lines. Even odd numbers are along the right side of the road from the base line and odd numbers are along the left side.